

The Impact of Placement with Relatives on Safety, Permanency and Well-being

Connecting Data and Stories to Improve Practice

- Stephen Shimshock
- Carol Punske
- Christopher Warren
- Melesa Murry
- Alexis Winstead

SAFE STRONG SUPPORTIVE

casey family programs

SAFE CHILDREN STRONG FAMILIES SUPPORTIVE COMMUNITIES SAFE CHILDREN STRONG FAMILIES SUPPORTIVE COMMUNITIES SAFE CHILDREN STRONG FAMILIES SUPPORTIVE COMMUNITIES SAFE CHILDREN STRONG FAMILIES SUPPORTIVE COMMUNITIES SAFE CHILDREN STRONG FAMILIES SUPPORTIVE COMMUNITIES SAFE CHILDREN STRONG FAMILIES SUPPORTIVE COMMUNITIES SAFE CHILDREN STRONG FAMILIES SUPPORTIVE COMMUNITIES

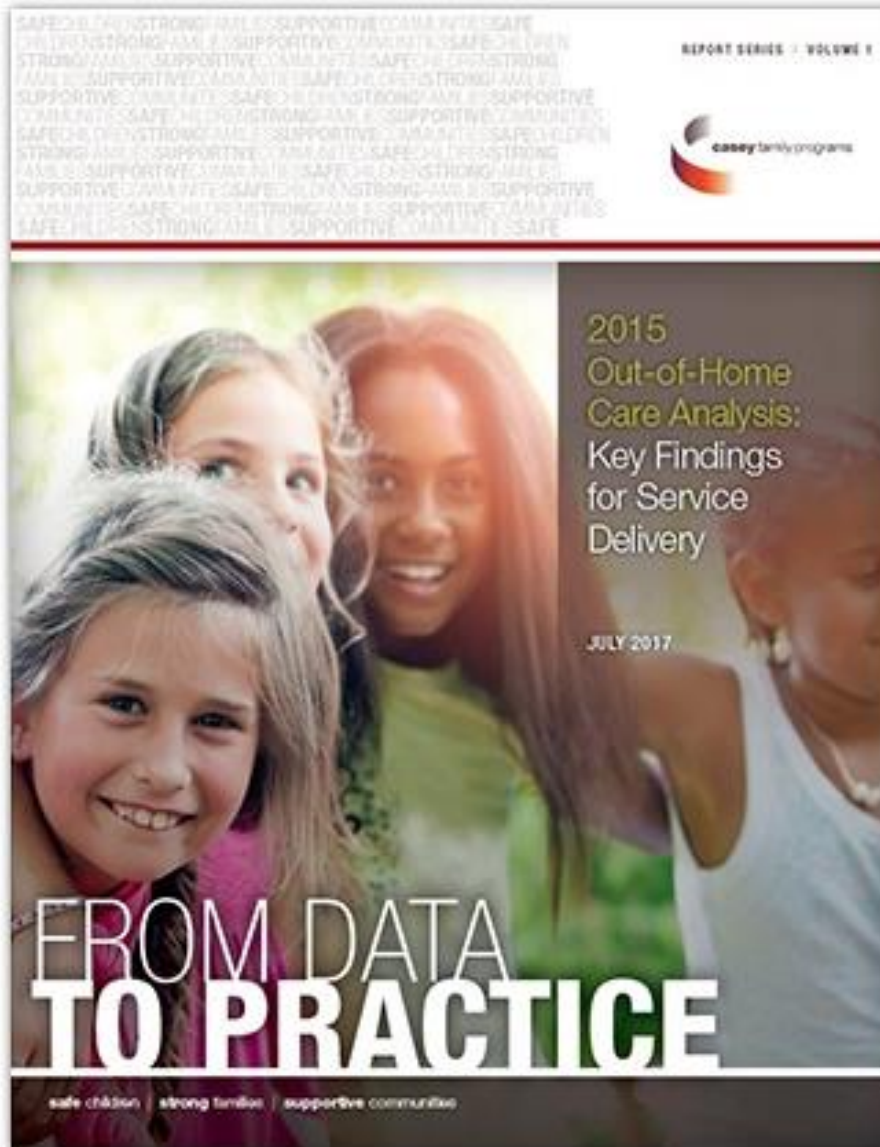
SAFE STRONG SUPPORTIVE

FROM DATA TO PRACTICE

From Data to Practice is a continuous quality improvement series that represents a learning opportunity driven by overarching questions from the field

The *From Data to Practice* process





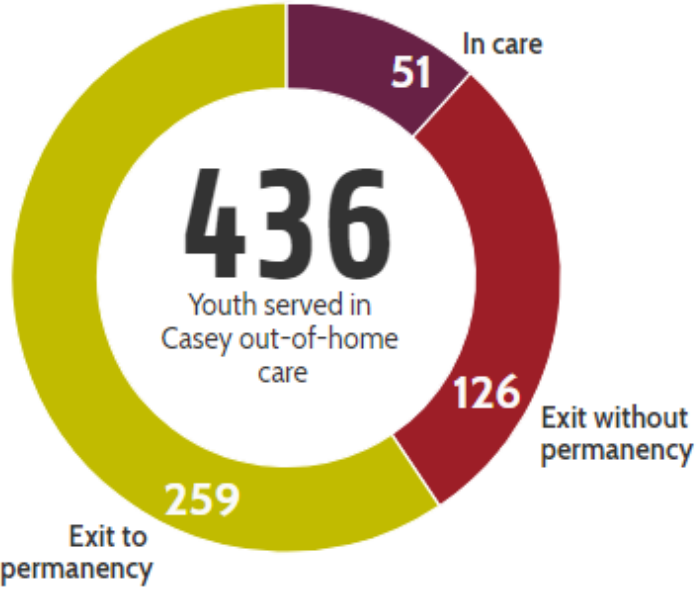
Our inaugural
From Data to Practice
report is on
Casey.org!

SAFE STRONG SUPPORTIVE

FROM DATA TO PRACTICE

What is the impact of placement with relatives versus placement with non-relatives on youth safety, permanency and well-being?

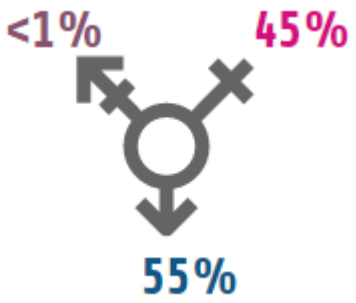
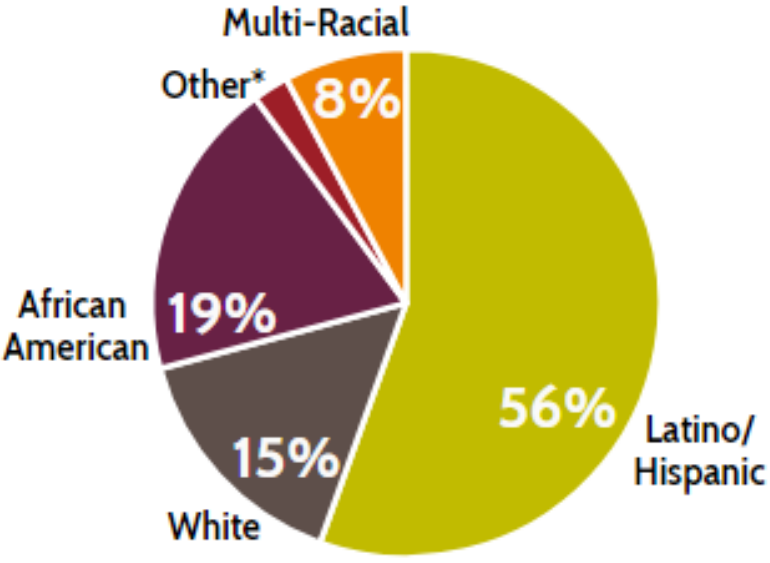
Youth in the entry cohort



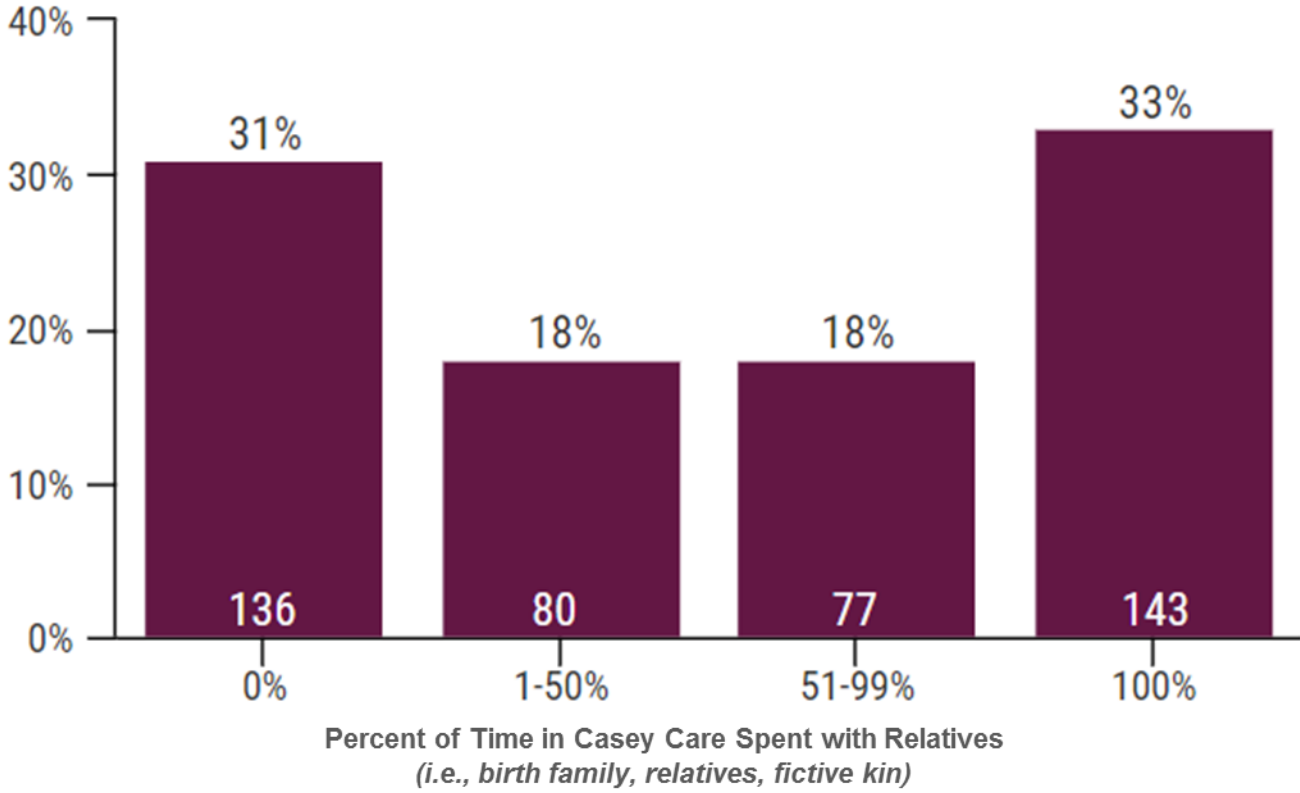
12.1
Current average age (years)

27%
Youth in placement supervision

430
Average number of days in Casey OOHC



Placement time spent with family/relatives



SAFE STRONG SUPPORTIVE

SAFETY

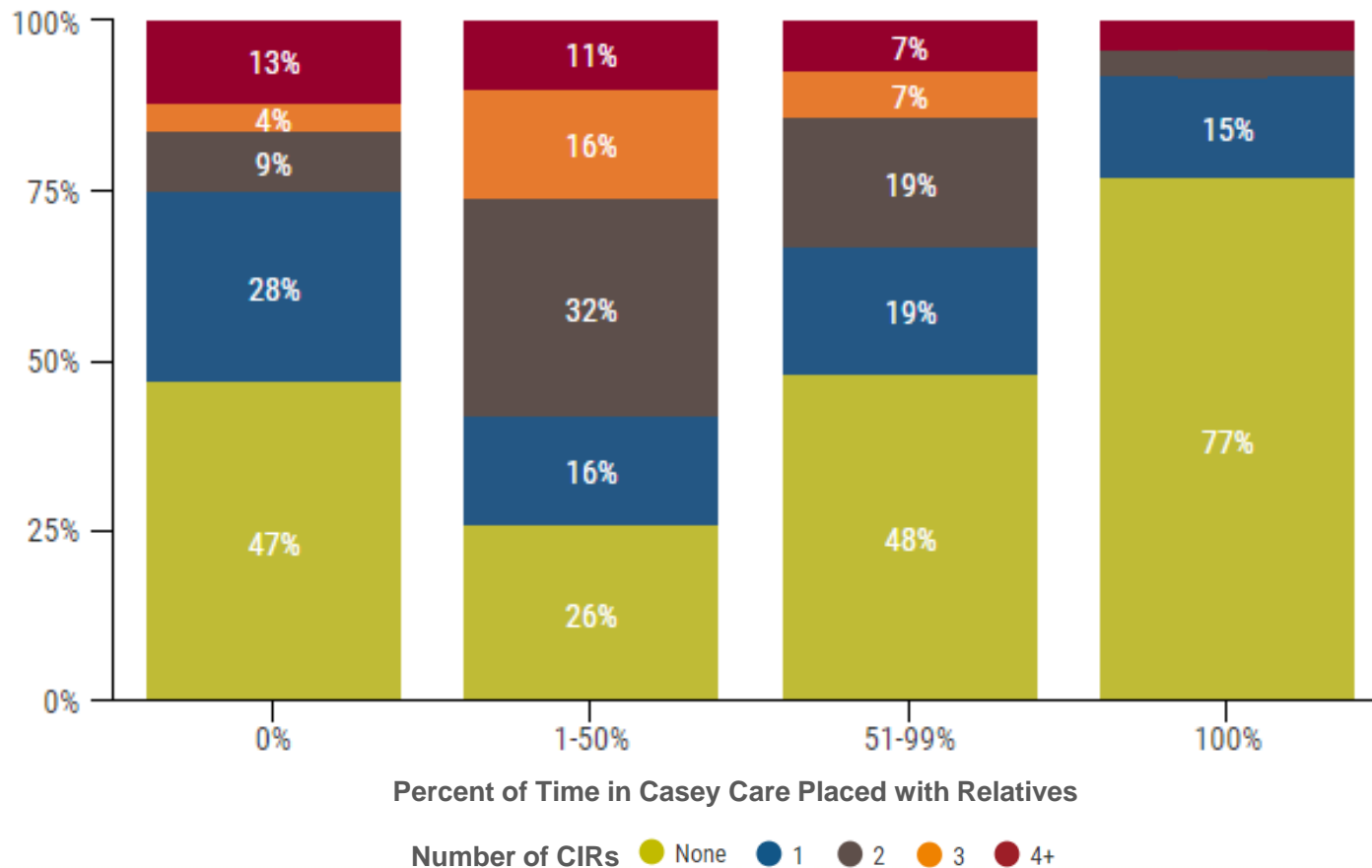
What is the impact of placement with relatives versus placement with non-relatives

Safety is difficult to define

- We do not have a standard, agreed upon definition of safety
- Safety includes whether the youth is safe from child maltreatment or other harm, and whether s/he feels safe
- We are beginning to explore critical incident report (CIR) data, specifically for placement supervision youth



Number of Critical Incident Reports for placement supervision youth by percent of time placed with relatives



SAFE STRONG SUPPORTIVE

SAFETY

Melesa Murry and Christopher Warren



SAFE STRONG SUPPORTIVE

WELL-BEING

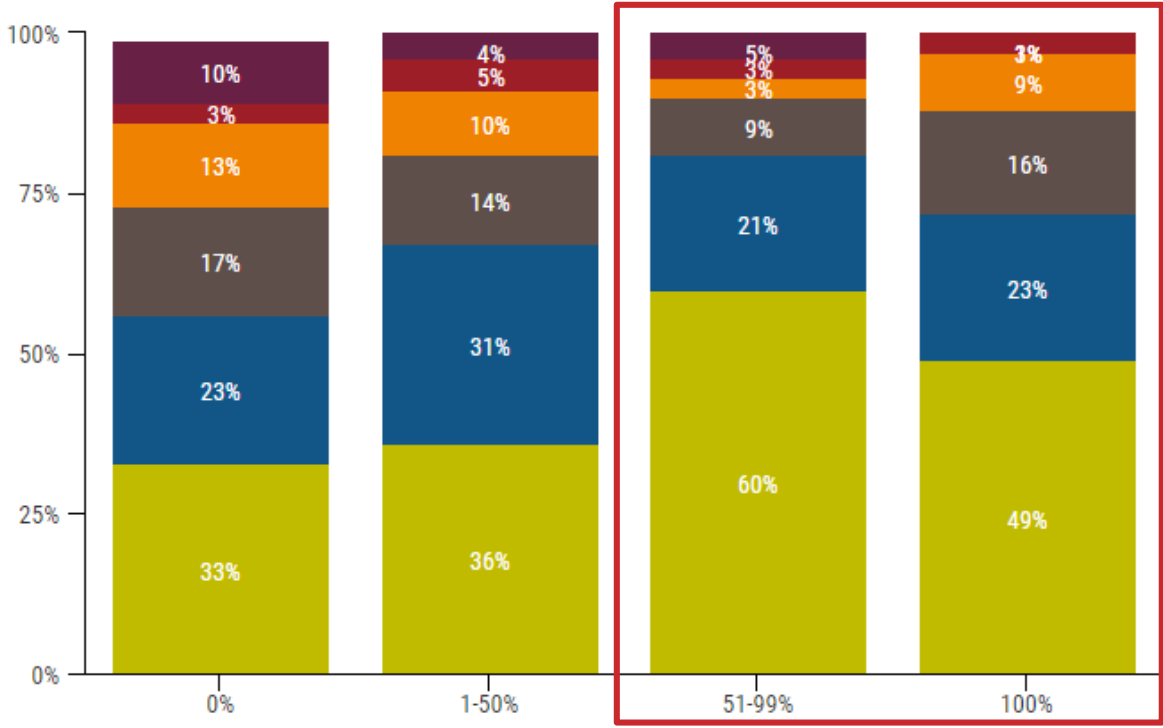
What is the impact of placement with relatives versus placement with non-relatives

A beginning to the conversation

Mapped indicators identified by the field onto CANS items to come up with a set of eight preliminary indicators of well-being:



Recent well-being by percent of time placed with relatives



Percent of Time in Casey Care Placed with Relatives

● None
 ● 1
 ● 2
 ● 3
 ● 4
 ● 5+

Number of Actionable Well-being Indicators

SAFE STRONG SUPPORTIVE

WELL-BEING

Carol Punske

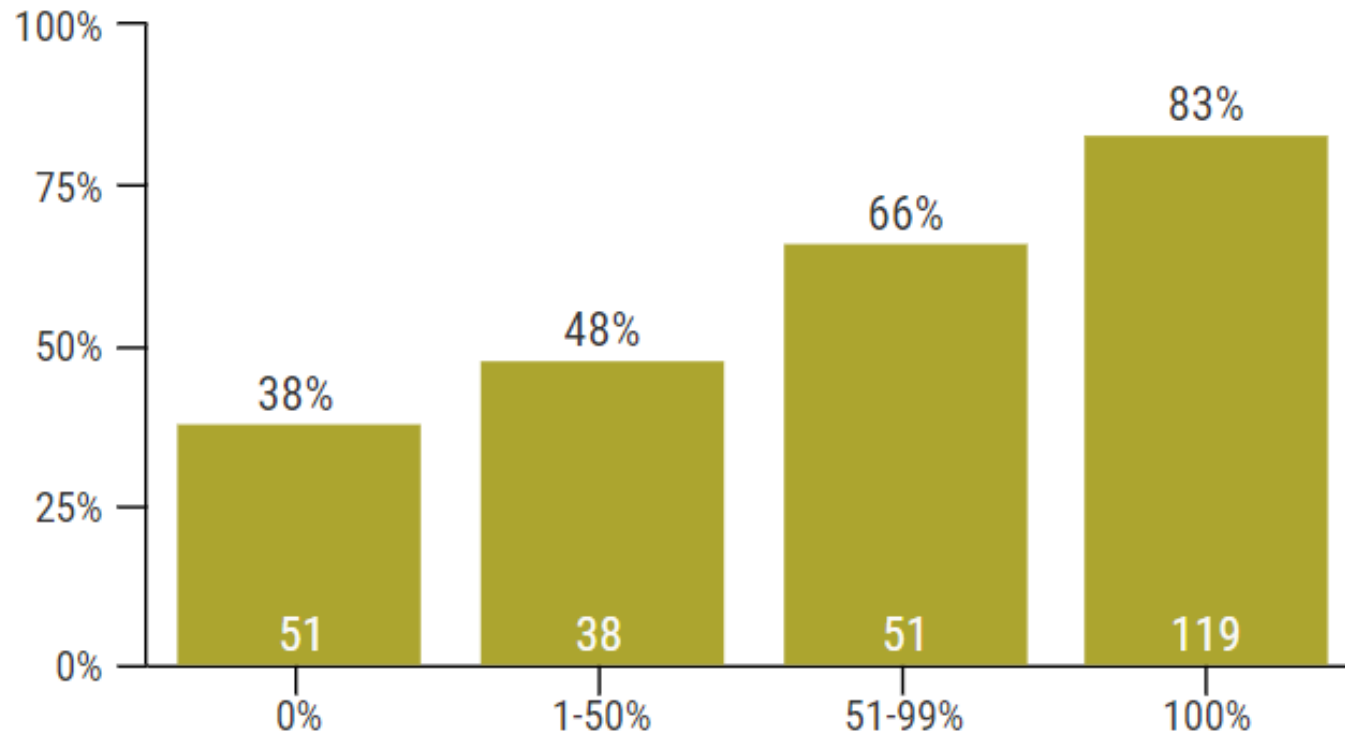


SAFE STRONG SUPPORTIVE

LEGAL PERMANENCY

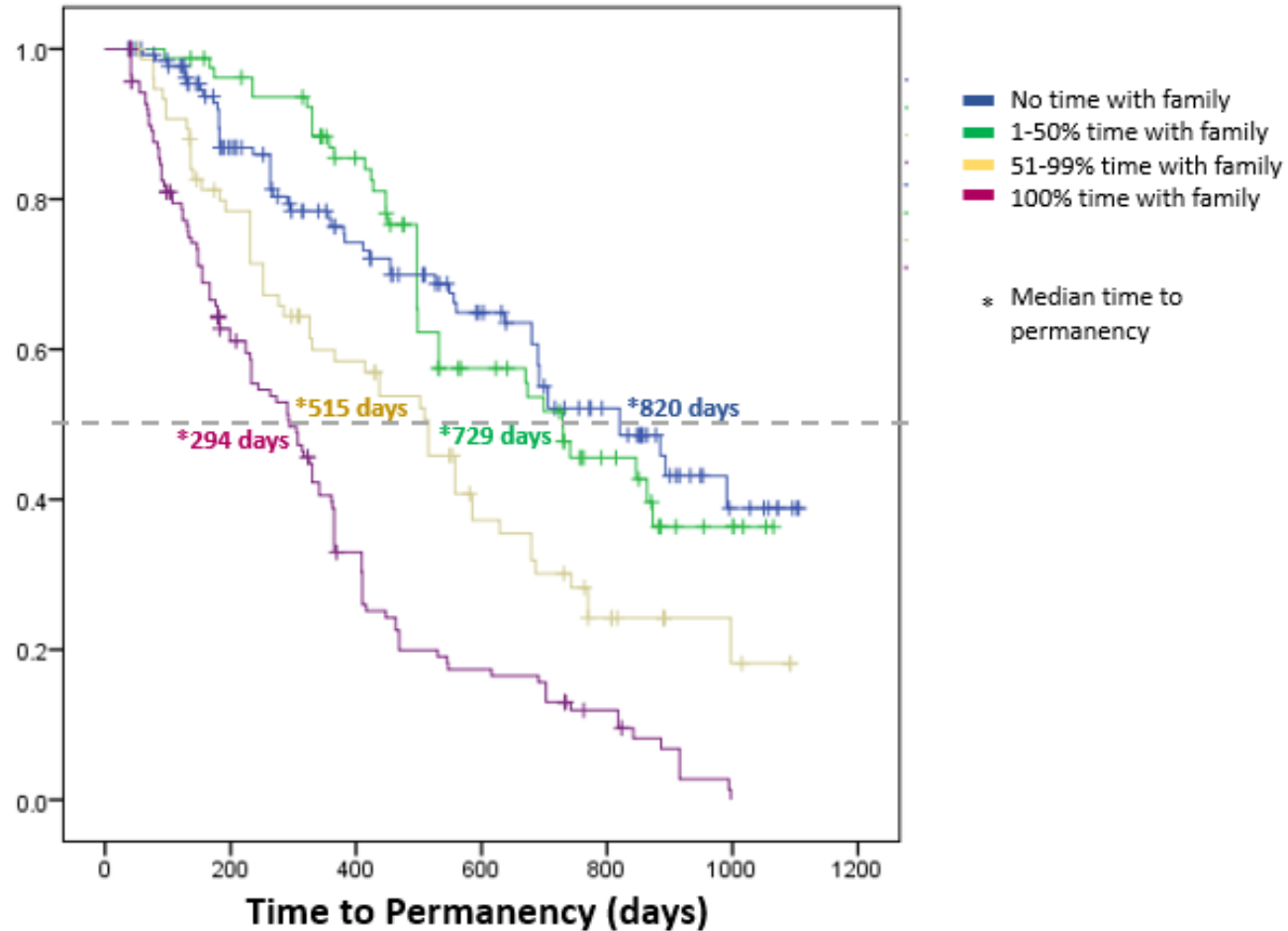
What is the impact of placement with relatives versus placement with non-relatives

Legal permanency achieved by percent of time placed with relatives



Percent of Time in Casey Care Placed with Relatives

Time to legal permanency by percent of time placed with relatives



SAFE STRONG SUPPORTIVE

LEGAL PERMANENCY

Alexis Winstead



Thank you to our evaluation team

Yvonne Humenay Roberts

Toni Rozanski

Jorge Cabrera

Matt Claps

Kirk O'Brien

**A SPECIAL THANK YOU
FOR SHARING YOUR STORIES**

Carol Punske

Christopher Warren

Melesa Murry

Alexis Winstead

CONTACT INFORMATION

Stephen Shimshock

sshimshock@casey.org

206-216-4178