

child family  
placement happiness  
court case worker plan  
heart **Foster care**  
support healing trama  
home hope  
loved  
safe

# Executive Session

Local, State and Nation-Wide Trends in Foster Care



# Session Overview

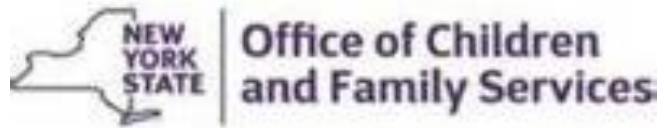
- **Updates from the Philanthropic Field**, Howard Knoll – Casey Family Program
- **Updates from the State**, Renee Hallock – NYS Office of Children and Family Services
- **Updates from the Voluntary Agency Field**, Dr. Jeremy Kohamban, Children's Village
- **Updates from the County**, Jim Czarniak, Onondaga County DCFS
- **Question and Answer Session**

# Updates from the Philanthropic Field



Howard Knoll – Senior Director  
Casey Family Programs

# Updates from the State



Renee Hallock – Associate Commissioner  
NYS Office of Children and Family Services

# Updates from the Voluntary Agency Field



KEEPING CHILDREN SAFE AND FAMILIES TOGETHER

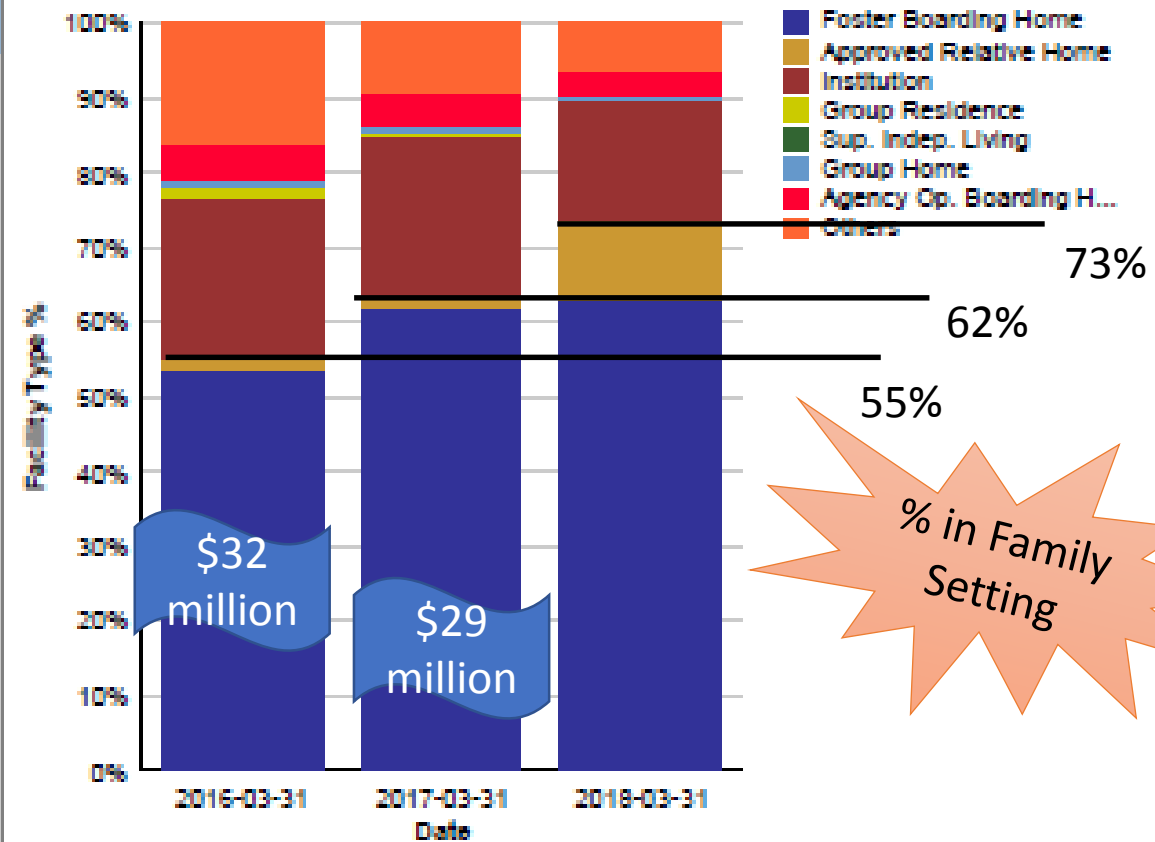
Dr. Jeremy Kohamban, President & CEO  
Children's Village

# Updates from Onondaga County



James C Czarniak, Deputy Commissioner  
Onondaga County Department of Children and Family Services

	Mar-16	Mar-17	Mar-18
<b>In Foster Care</b>	395	361	401
<b>Facility Type</b>			
Foster Boarding Home	212	224	252
Approved Relative Home	6	6	43
Institution	85	77	65
Group Residence	5	2	0
Group Home	4	4	2
Supervised Independant Living	0	0	0
Agency Operated Boarding Home	19	15	15
Other	64	33	24
<b>Placement Type</b>			
Placed in Local District	150	146	183
Placed in Voluntary Agency	250	227	219
<b>ASFA Time In Care</b>			
In Care 0-6 months	110	89	111
In Care 7-9 months	43	40	39
In Care 10-12 months	30	23	38
In Care 12+ Months	217	221	214



[OCFS Data Warehouse - In Care Summary Report by District](#)

# Supports

- Support from the Redlich Horwitz Foundation
- Appropriation for County for Foster Care Reinvestment
- Technical Assistance from Casey Family Programs

# Strategies

## **Policy Changes**

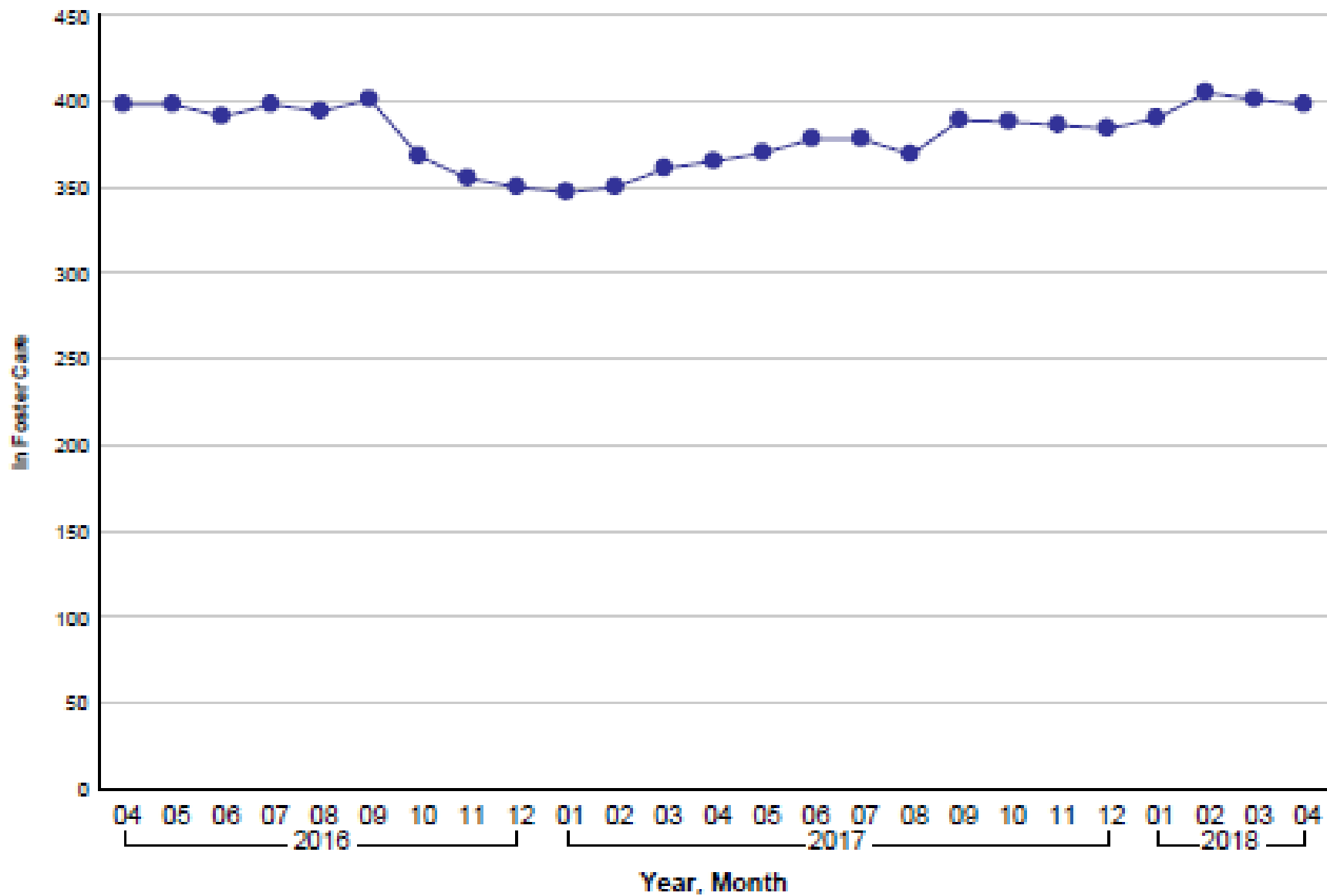
- Required Administrative Review and Approval of all admissions into Institutional Level Care
- Required Case Reviews of Youth in Institutional Level Care
- Executive Direction on Emergency Certification and Certification of Kin, including Admin review of any kinship placement not meeting current county certification standards



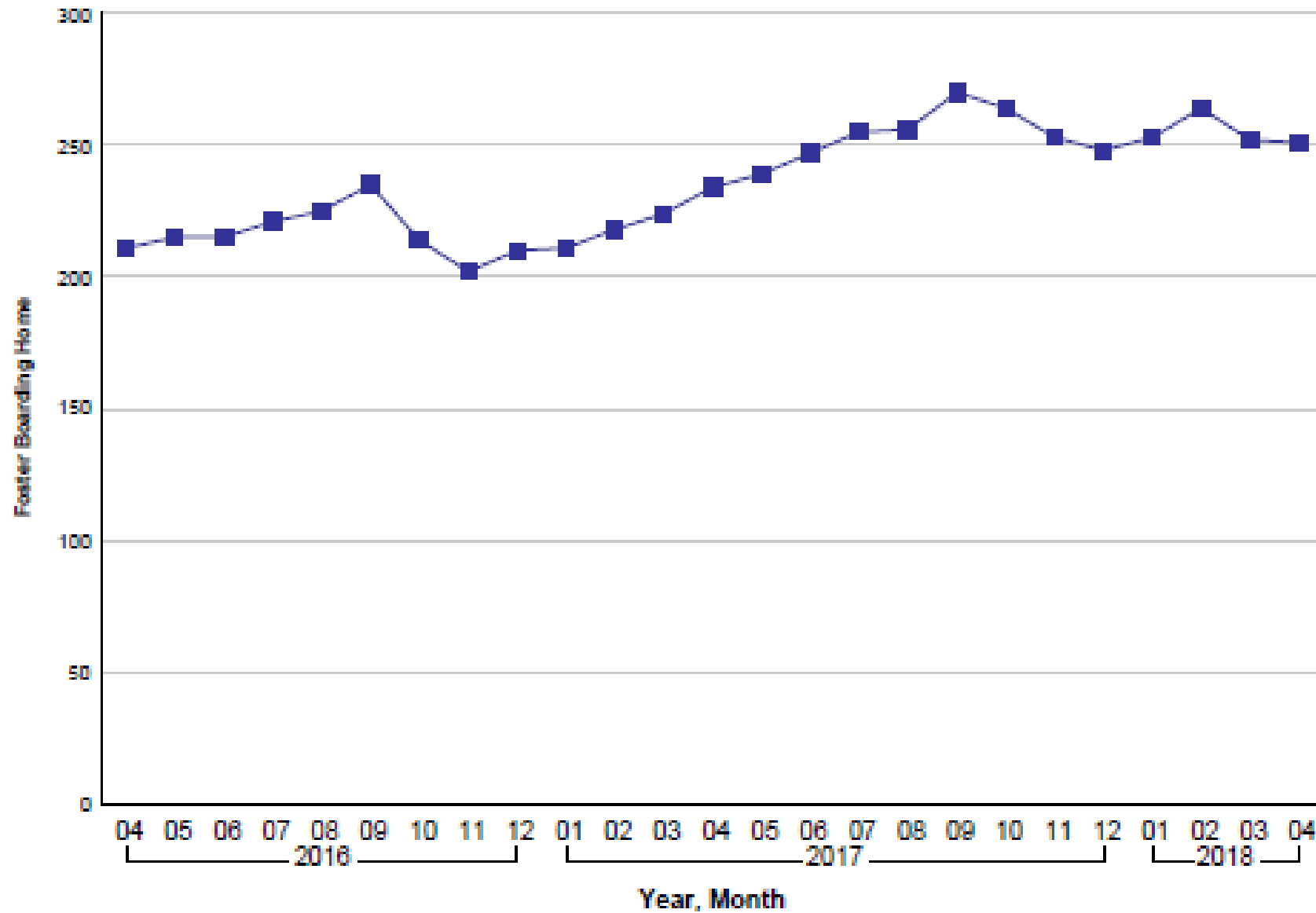
# Strategies and Investments

- Increased Contract with Hillside to increase training for Kinship families, specifically those that are emergency certified
- Enhanced contract with our 3<sup>rd</sup> Party Review to increase the frequency and facilitation of youth in Institutional Care
- Invested one (1) Senior Caseworker and three (3) Caseworkers to create the County Triage Team– dedicated to finding and supporting placement (emphasis on kin)
- Rate Reviews– Reviewing rates and supports with Voluntary agencies and Foster Homes to assist in getting to ‘Yes’

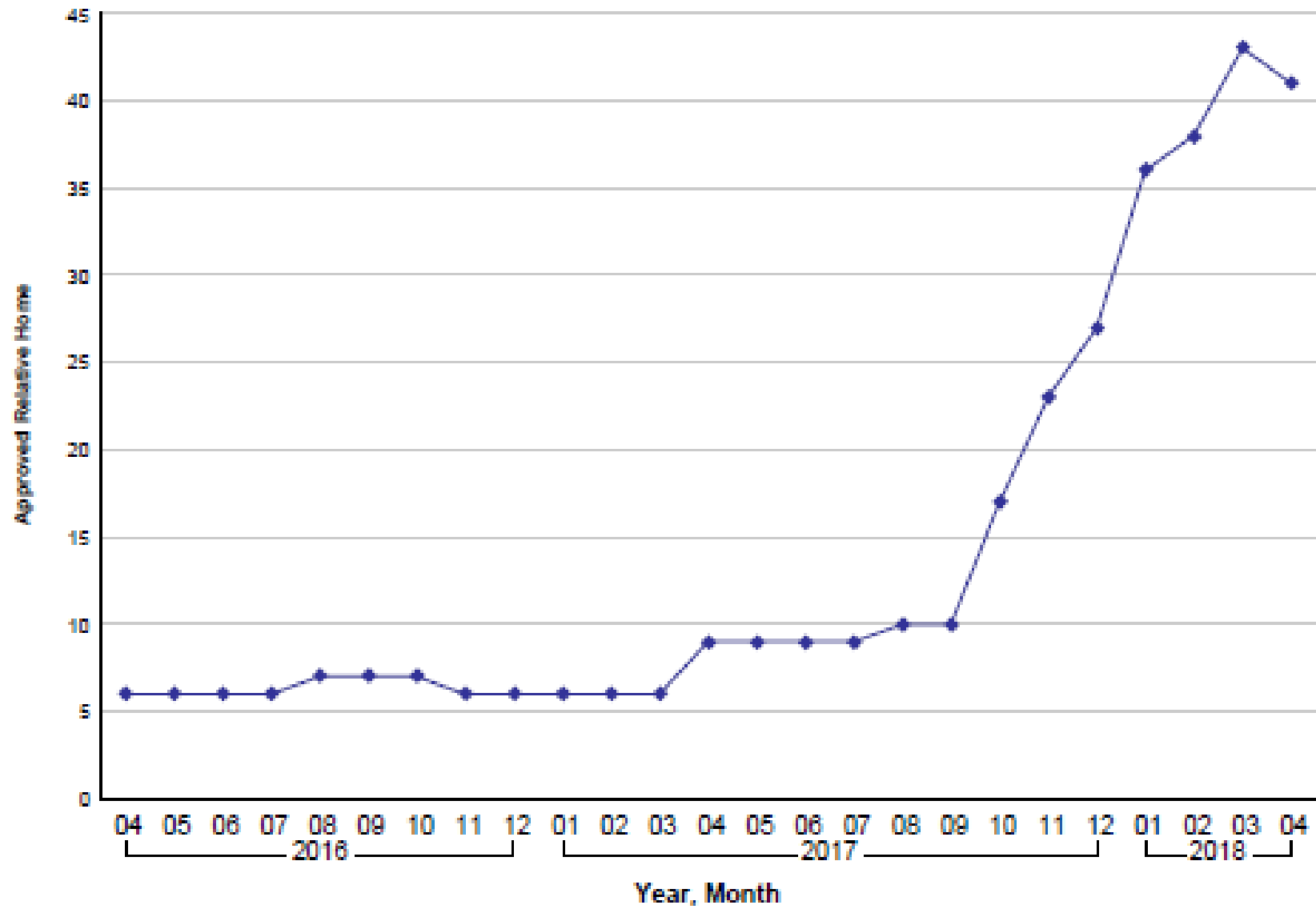
### 25 Month In Foster Care Trend



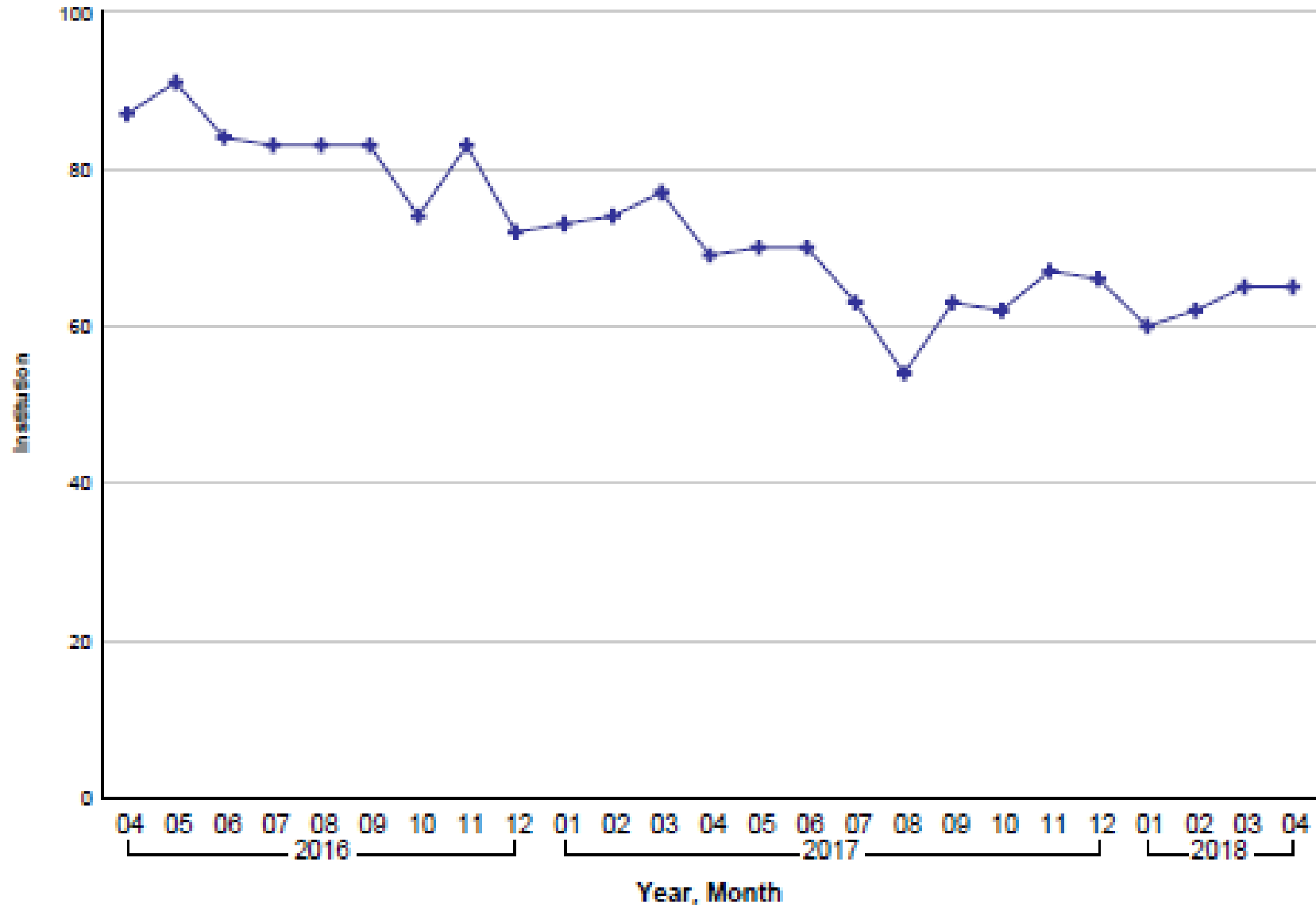
### 25 Month Foster Boarding Home Trend



### 25 Month Approved Relative Home Trend



### 25 Month Institution Trend



# Upcoming Opportunities

- Reinvesting Institutional Funds to After Care, In-Home, Community Supports
  - Re-Aligning Contracts to support Customized Services and After Care contracts with agencies willing to shorten lengths of stay in Institutions
- Raise the Age– With increased numbers in care for JJ offenses, supporting after care and in-home services that can better marry with Probation Supervision
- Increasing in-home supports for kinship placements
- Aftercare– Increasing investment in after care services for post adopt, post guardianship needs

# By 2020...

- 85% of all youth in Foster Care will be in a family / home environment while in care (currently 73%)
- 50% of all youth in Foster Care will be in a relative/kinship home (currently 11%)
- Onondaga will reduce its re-entry rate into Foster Care to less than 5% (currently 12.9%)

## Challenges

- Mental Health and OPWDD 'stressors' to system and permanency
- Juvenile Justice population with Raise the Age...what will impact on re-entry be if services are not there to support timely re-entry, are voluntary agencies prepared for this population?

# Questions?

