

Every Kid Needs a Family Strategy

April 19 2017

All in For Kin

Onondaga County Permanency Summit

THE ANNIE E. CASEY FOUNDATION
CHILD WELFARE STRATEGY GROUP



Annie E. Casey Foundation's work focuses on strengthening families, building stronger communities and ensuring access to opportunity

Our initiatives:

- **Child Welfare**
- Juvenile Justice
- KIDS COUNT
- Economic Opportunity
- Community Change
- Evidence Based Practice
- Leadership Development
- Research and Policy
- Equity and Inclusion

CHILD WELFARE STRATEGY GROUP

Works with public systems to improve outcomes for children involved with child welfare systems

Field work (consulting)

- Multi-year strategic consulting to identify barriers to finding children a permanent family and introduce reforms that can succeed in complex, often under-resourced child welfare agencies
- Targeted technical assistance to help jurisdictions improve in specific practice areas

Field building (strategies)

- Develop models, tools and other resources to help public agencies and providers make measurable improvements in meeting the needs of children

Children should be placed in settings that are developmentally appropriate and least restrictive

Research:

- Kids do best in families
- Healthy attachments and customized parenting

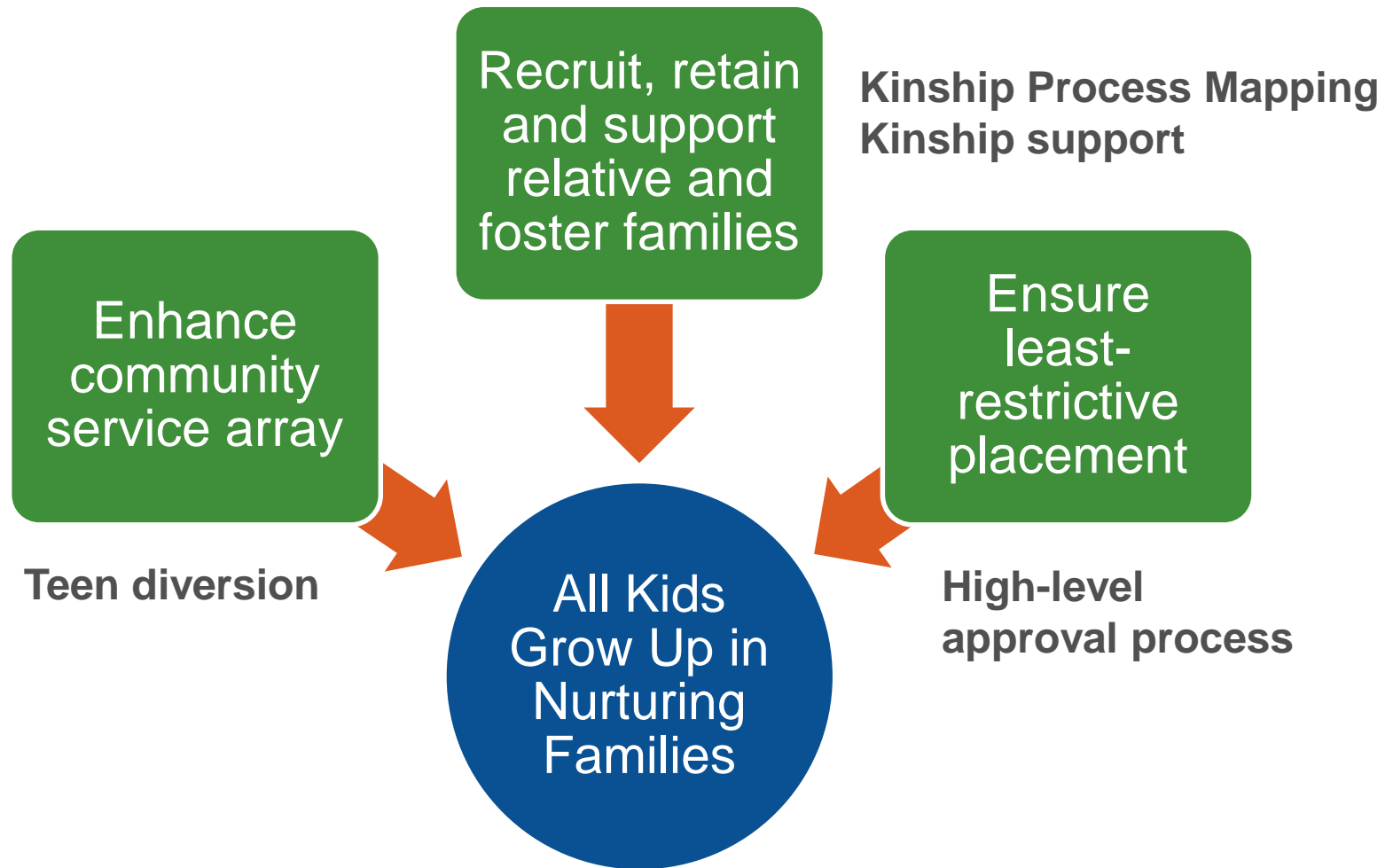
Data:

- 1 in 7 children in foster care are not placed with a family
- For teens it is 1 in 3

High quality residential:

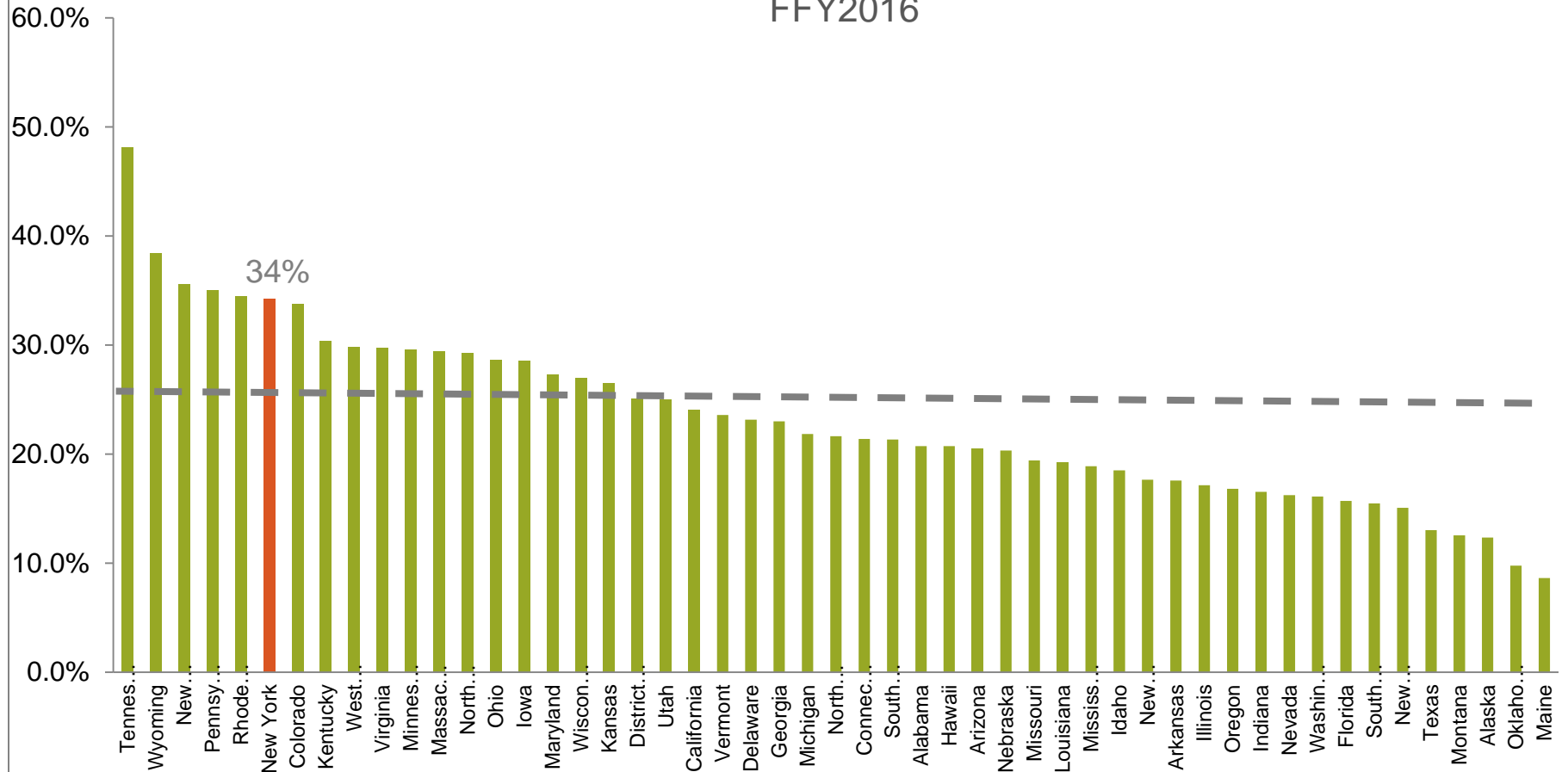
- Essential part of service continuum
- Short-term, treatment focused, involves family in treatment and aftercare

Let's look at some practices to increase the odds that children and youth involved in child welfare are cared for in families



In 20 states, older youth represented at least twenty-five percent of the entries into the child welfare system

Percent of Teen Entries (Age 13+) FFY2016



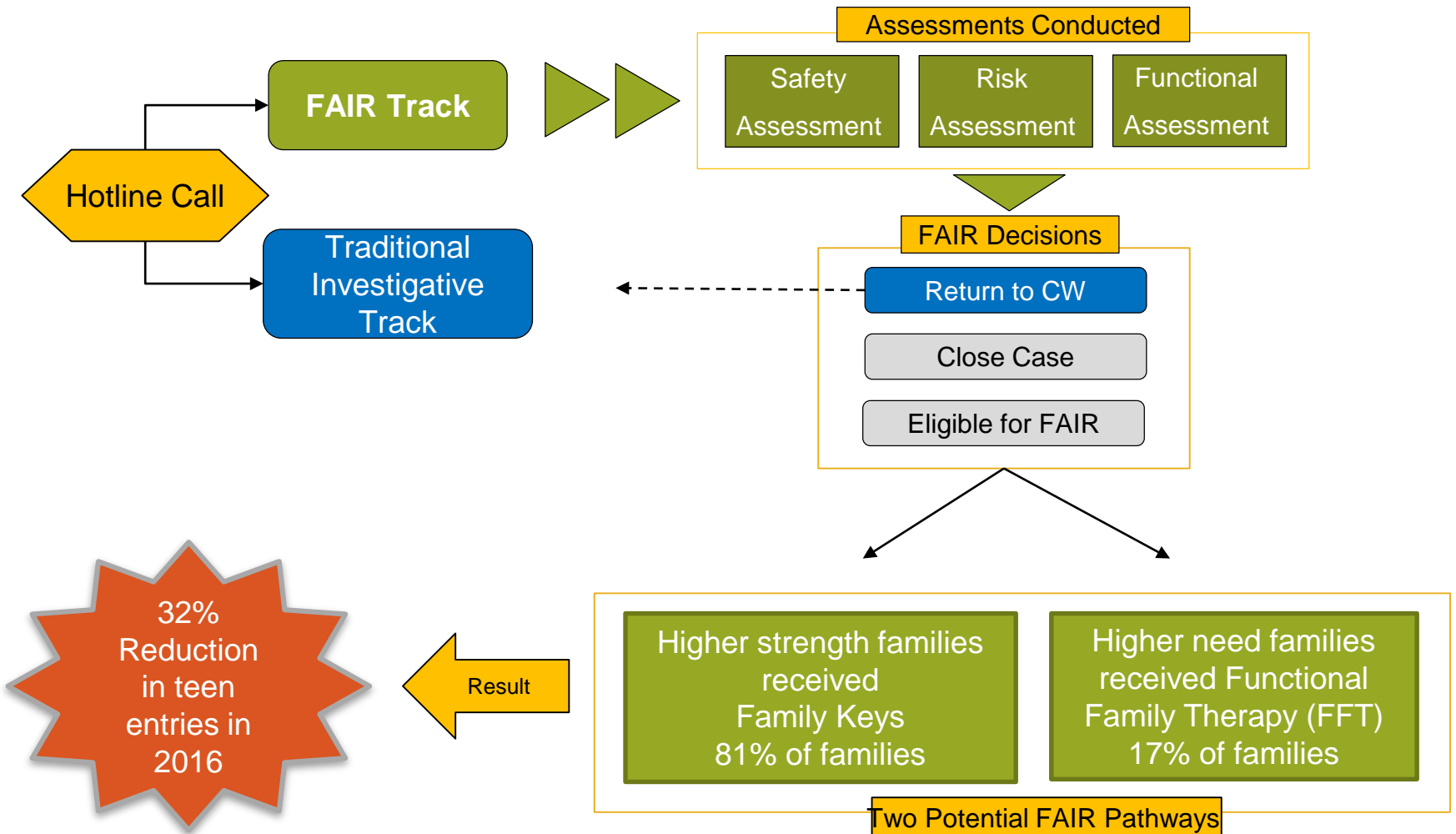
*Source: ACFARS Public Use Files, FY2016

To better address the needs of teens and their families through Differential Response, Delaware designed its teen diversion model

Family Assessment Intervention and Response (FAIR) Key Program Features

- Cases are screened directly from the hotline and referred to the community-based provider based on risk and safety assessment tools & program criteria
- Operated by a private contractor not the state child welfare agency
- Timeliness of response to families in crisis. Contact is made within 24 hours of hotline call and face to face visit is completed within 48 hours
- Family engagement is a key component of the model
- Strong collaboration between the child welfare agency and the community-based provider

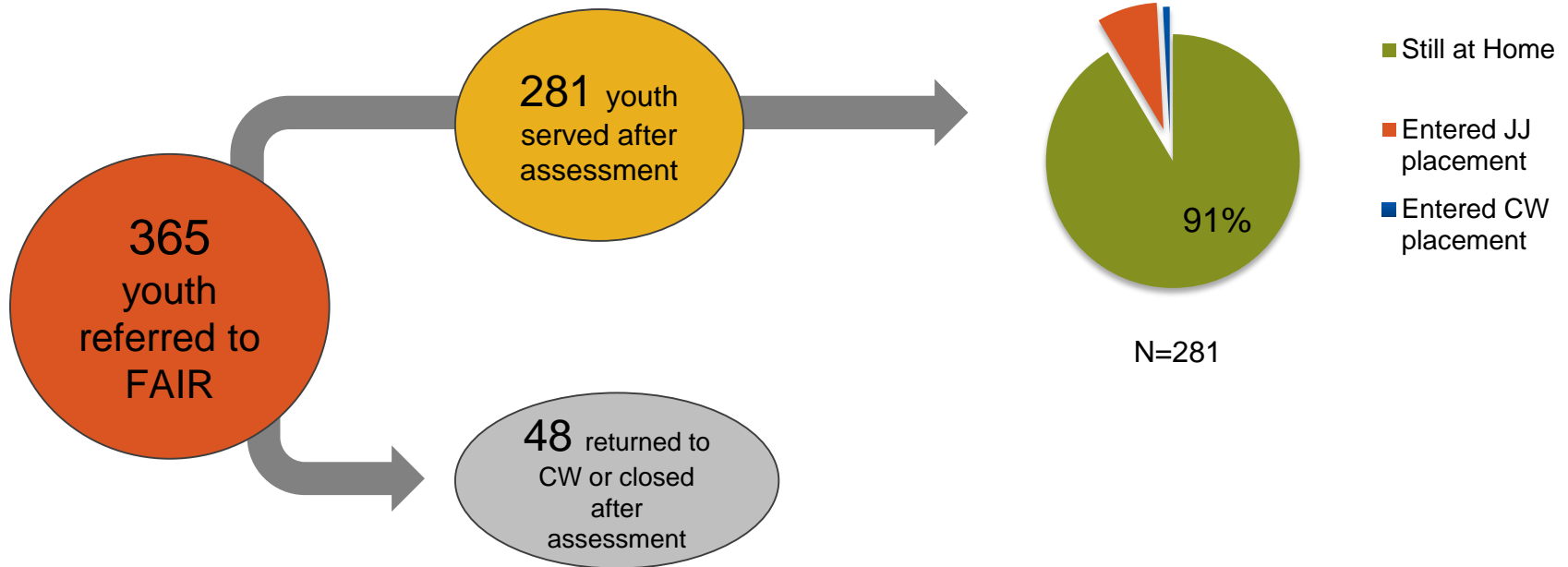
Since 2013, the Delaware FAIR program has experienced a 32% reduction in new teen entries into the system



Data from March 2013-March 2014
*2% of families were in both programs

Since its launch in March 2013, the Delaware FAIR program has had great success diverting teens from out-of-home placements

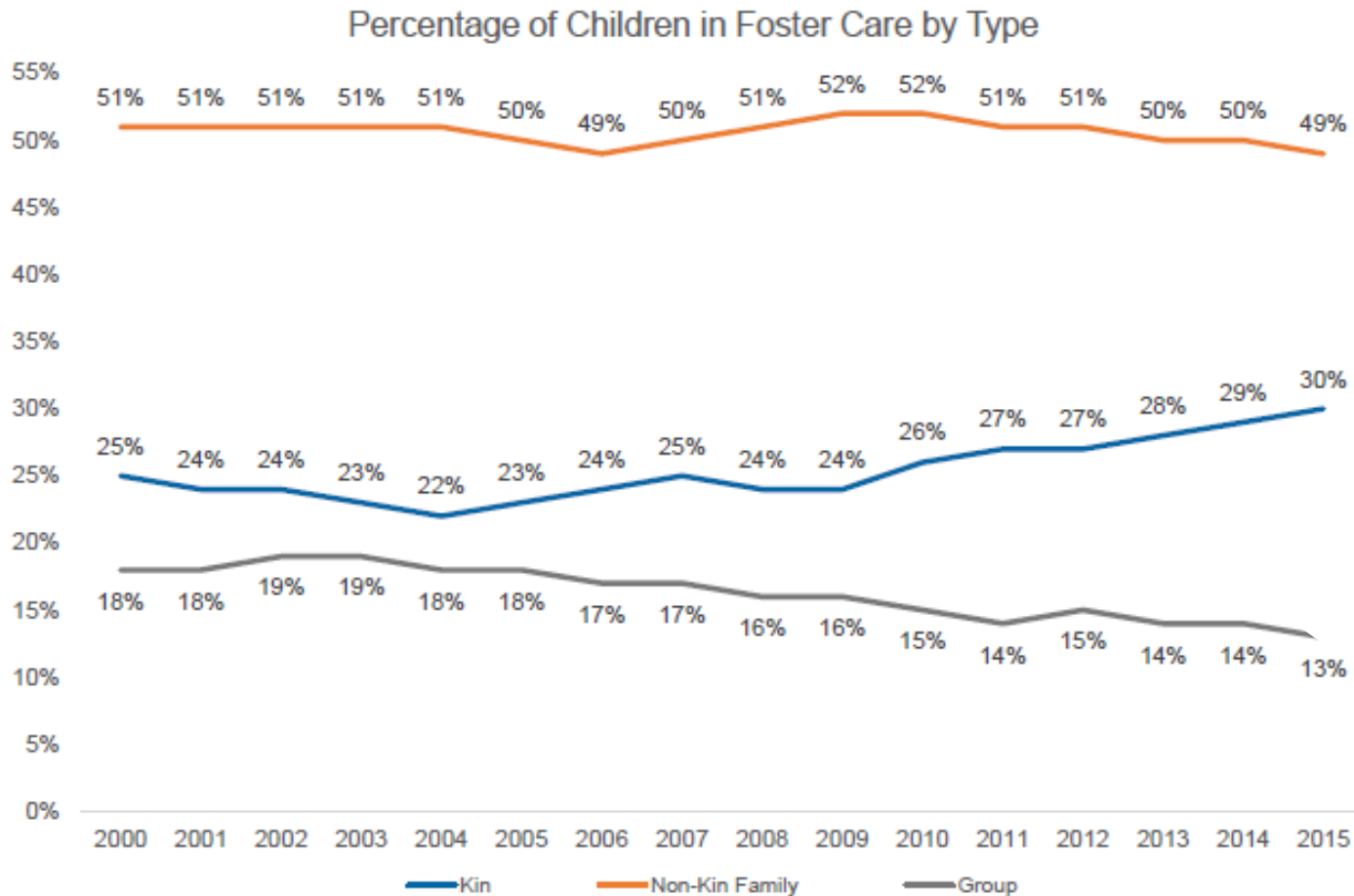
Of the 281 youth served by FAIR after assessment between March 2013 and March 2014, 91% of them have so far been diverted from out-of-home placements*



* 36 families declined; 48 were sent back to CPS for safety issues or were closed due to lack of safety or risk issues

* Data collected is from March 2013 through March 2014

Kinship care is a key substitute for group placements



We all know the good reasons for placing kids with relatives

Enables children to live with people they know and trust.

Reduces the trauma of living with people who initially are unknown.

Supports the transmission of a child's family identity, culture and ethnicity.

Facilitates children's connections to their siblings.

Strengthens the ability of families to give children the support they need.

Kinship Process Mapping (KPM) is a tool adapted from business to increase efficiency and effectiveness in working with kinship families

- A how-to guide to help agencies prepare for KPM, facilitate KPM sessions, analyze results and develop solutions:
 - A small team analyzes the flow of kinship across the life of the case
 - Delving deeply into processes and flows, the team identifies policy, practice and perception barriers for:
 - Identifying kin
 - Approving kin for unlicensed or licensed care
 - Supporting kin



<http://www.aecf.org/resources/kinship-process-mapping-full/>

Engaging Kinship Caregivers Training Series Modules

MODULE 1: GUILT

MODULE 2: LOSS AND AMBIVALENCE

MODULE 3: PROJECTIONS AND TRANSFERENCE

MODULE 4: HOPE, FANTASY AND DENIAL

MODULE 5: LOYALTY ISSUES

[Home](#) > [BLOG](#) >

Engaging Kinship Caregivers With Joseph Crumbley

POSTED OCTOBER 24, 2017, BY THE ANNIE E. CASEY FOUNDATION

SHARE VIA:



As the number of kinship caregivers increases for children in foster care and more child welfare jurisdictions adopt a “kin first” placement

Popular Posts

[Our Statement on Ending DACA](#)

[Jeff Edmondson on Getting Communities to Work Together to Get Results](#)

[Our Children Are Watching: What Are We Teaching Them?](#)

[Turning Brain “Strains” Into “Gains” for Adolescents in Foster Care](#)

[One in Five U.S. Kids Lives in a Food Insecure Home](#)

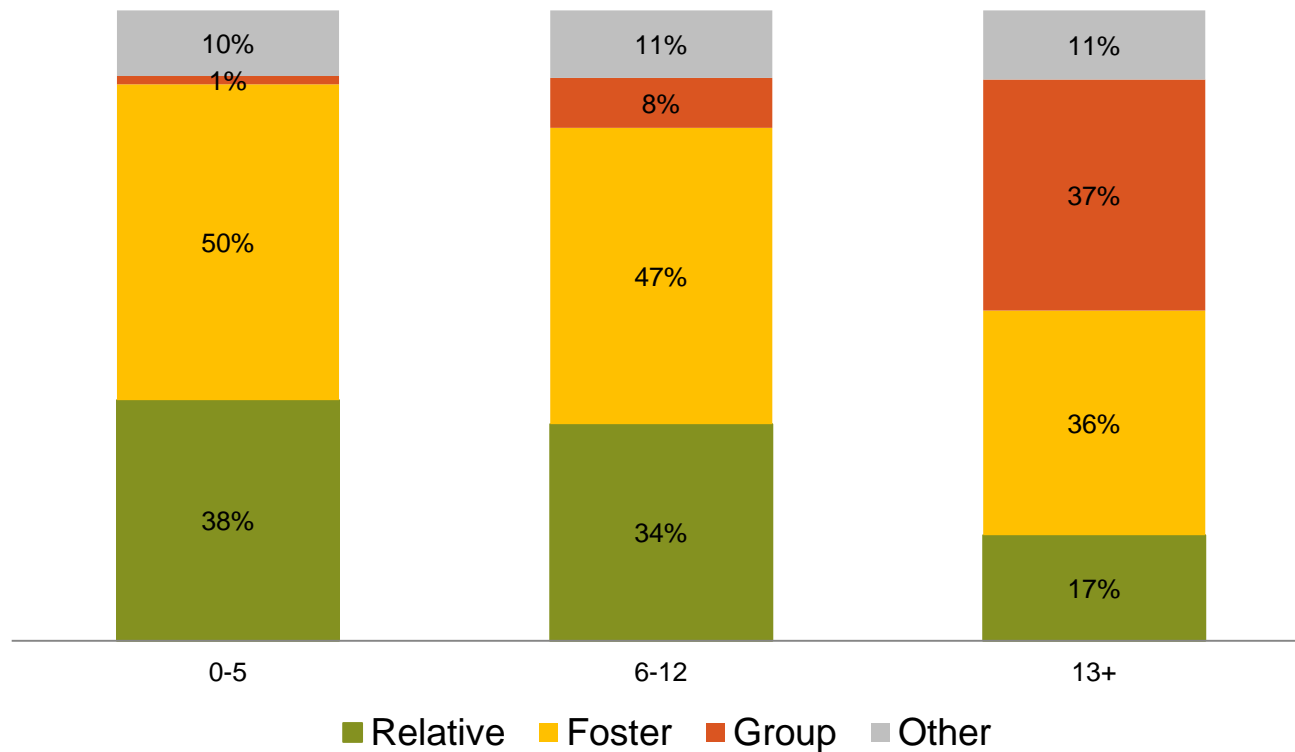
Recent Popular Topics

[Foster Care \(25\)](#)

<http://www.aecf.org/blog/engaging-kinship-caregivers-with-joseph-crumbley/>

Family-based placement is less likely for older children and teens, and many teens experience congregate care as their first placement

Placement Setting for Children in Care on September 30, 2015



Note: "Other" includes Supervised independent living, runaway, pre-adoptive home, and trial home visit.

Source: AFCARS A/B File Submissions

Requiring authorization of all new group care placements by the system's highest level executive will increase kin and foster family placements

Top leader authorization of all new potential placements into any congregate care facility, requires:

- Demonstration that family-based settings have been considered and ruled out
- Justification of a more restrictive level of care

Required top-level approval of all new group placements is relatively easy to enact and promotes quick results

DIRECTOR APPROVAL PROCESS

Referral to Placement by investigative worker

- Demonstrating family placement explored
- Justifying need for group placement
- Placement may request more information or due diligence



Placement sends request to Director's office

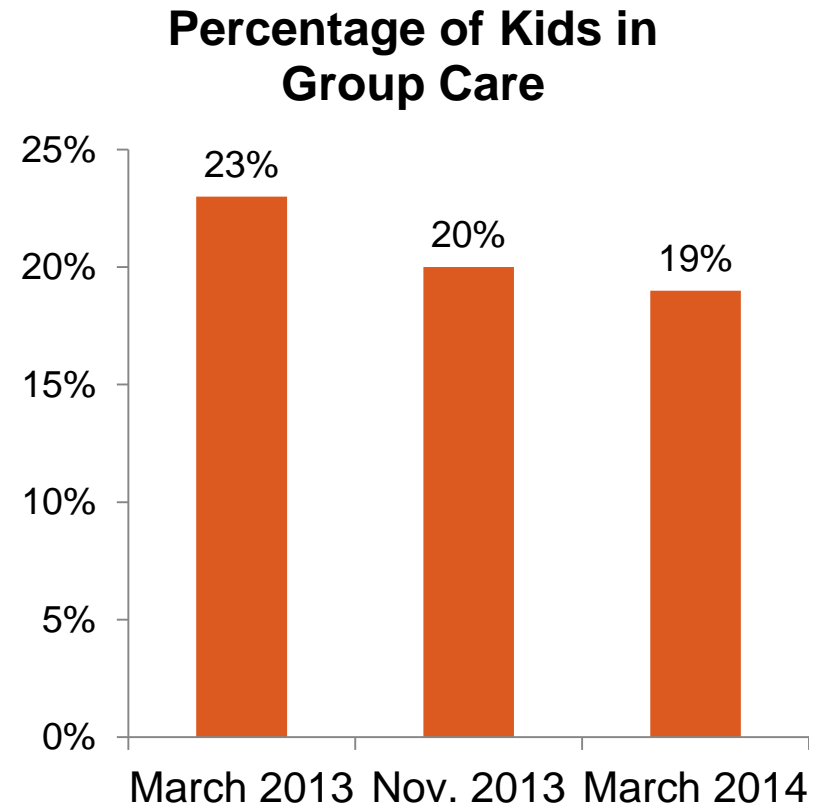
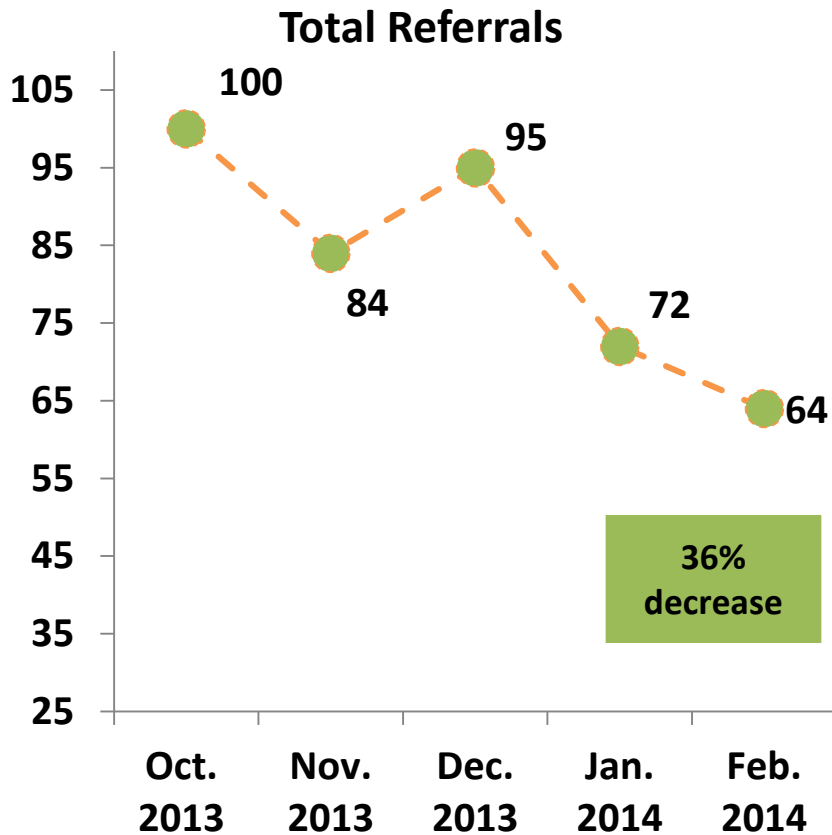
- Request is reviewed by licensed masters level social work
- Recommendation to Director to approve or deny
- Alternatives to group placement are outlined in denials



Director signs off on all approvals and denials

- Approvals and denials are forwarded to Placement, supervisor and worker

For one CWSG client, referrals for the Commissioner's approval declined as well as the percentage of kids in group care



More resources:

Engaging Kinship Caregivers - The Foundation developed a five-part video training series: “Engaging Kinship Caregivers: Managing Risk Factors in Kinship Care.” Led by [Joseph Crumbley](#), the training sessions strengthen the skills of child welfare professionals in supporting families to improve outcomes for children. The series includes a [discussion guide](#) to help program directors, supervisors and trainers lead group sessions to deepen the learning experience.

<http://www.aecf.org/blog/engaging-kinship-caregivers-with-joseph-crumbley/>

Kinship policy, practice and data tools. See *Kinship process mapping* at <http://www.aecf.org/resources/kinship-process-mapping-full/>

Teen Entries. Too Many Teens: Preventing Unnecessary Out-of-Home Placements <http://www.aecf.org/resources/too-many-teens/>

Teen Connect – Connect, a manualized, 10-week parent education and support training model. It is an attachment-based, trauma-informed approach that incorporates effective engagement strategies with experiential learning and skill development. Connect recognizes that it is not enough to address the symptoms of youth; healthy family functioning also is critical to support and sustain a youth’s improved functioning.

Reducing unnecessary group placements. See *Rightsizing congregate care: A powerful first step in transforming child welfare systems* <http://www.aecf.org/resources/rightsizing-congregate-care/>

[Every Kid Needs a Family: A Message to Caseworkers](#), 2016 (video). young people who spent time in foster care make a compelling argument that caseworkers need to persist in connecting teens with family — because every teen needs a family.

[Every Kid Needs a Family: Advice to My Younger Self](#) 2016 (video). Explores what the former youth I care say they wish they had known years ago about the importance of family.

A Resource for Strengthening Adoptive Families with Older Kids <http://www.aecf.org/blog/a-resource-for-strengthening-adoptive-families-with-older-kids/>

Turning Brain “Strains” into “Gains” for Adolescents in Foster Care <http://www.aecf.org/blog/turning-brain-strains-into-gains-for-adolescents-in-foster-care/>

Improving Child Welfare Practice with the power of Adolescent Brain Development <http://www.aecf.org/blog/improving-child-welfare-practice-with-the-power-of-adolescent-brain-develop/>



THE ANNIE E. CASEY FOUNDATION

Developing solutions to build a brighter future for children, families and communities

www.aecf.org